

Teacher Information Pack



Table of Contents

Visiting the Museum _____	1
Early Years _____	2
Key Stage 1 _____	3-4
Key Stage 2 _____	5-6
Key Stage 3 _____	7-8
Send groups _____	9-10
Before you Visit _____	11-12
On the Day _____	13
After the Visit _____	14

This information pack will help you to book and plan your visit. If you have any questions or require any more information, our team will be happy to help.

We look forward to welcoming you to the Museum soon and hope you have a wonderful visit!

Visiting the Museum

With a core focus on history, science and changes in technology, the Museum is a fantastic space for your pupils to experience an array of topics! A day at the London Museum of Water & Steam couples unique learning experiences alongside our world-famous collection of stationary steam engines all within a historic pumping station.

You and your pupils will enjoy:

- A unique and memorable day, surrounded by engines of the industrial revolution.
- A dedicated member of our Learning Team for the duration of your visit.
- Free coach parking, for one coach or two minibuses, in our car park. With advance notice.
- Good connections to Kew Bridge national rail, Gunnersbury Park underground and overground, and bus routes to Richmond, Kingston, and Hammersmith.
- Both indoor and outdoor space to enjoy lunch.
- Toilet facilities, with space for storing coats, bags, and lunches.

We are open to school visits on Wednesdays, Thursdays, and Fridays. As we are a small museum, we only welcome one school per day and can accommodate a maximum of 60 pupils.

Please note, we also welcome pre-booked and community groups on Wednesdays, Thursdays, and Fridays, and are open to the public on Thursdays and Fridays.

Early Years

The Museum is a fascinating place to visit with Nursery and Reception children. Early years visits either run from 10:00 to 13:00 or 11:00 to 14:00 and cost £250 per class (group of up to 30 children). Bring two classes on the day for a cost of £225 per class (£450 total).

Your visit will include a guided exploration of the Museum, time in our Waterworks Gallery and Splash Zone (weather dependent), and one of the following interactive shows.

Billy Bob's Brilliant Bath and Other Stories

This interactive puppet show follows the story of Billy Bob as he learns all about boats, submarines, and the water in his bathtub! We also have a very interactive re-telling of Edward Lear's famous poem the Owl and the Pussycat.



Learning outcomes:

- To listen, understand and interact with the storyteller.
- To understand what coal is and what it is used for.

Super Soggy Science show

This interactive and fun show explores where water comes from, the 'monster soup' of 200 years ago, and how we can clean water using a simple filter!



Learning outcomes:

- To observe a phenomenon and use simple scientific language to explain what they see.
- To understand the water cycle.

Key Stage 1

Your pupils will not only love exploring the Museum, but our interactive and engaging workshops too. Visits run from 10:00 to 14:00 and cost £250 per class (group of up to 30 children). Bring two classes on the day for a cost of £225 per class (£450 total).

Your visit will include a guided exploration of the Museum, time in our Waterworks Gallery and Splash Zone (weather dependent) and one of the following shows or workshops.

Super Soggy Science Show

This interactive and fun show explores where water comes from, the 'monster soup' of 200 years ago, and how we can clean water using a simple filter!

Learning outcomes:

- To observe a phenomenon and use simple scientific language to explain what they see.
- To understand the water cycle.



Mrs Tristram's Wonderful Water Show

Pupils will travel back in time and learn about the history of making London's water supply clean. Through role play, they consider clean and dirty water sources, how water is purified and pumped into people's homes.

Learning outcomes

- To develop an awareness of the past.
- To begin to understand how events fit within a chronological framework.



Victorian Washday

Pupils will explore, using real museum objects, how the Victorians did their clothes washing. They will consider the effort involved and how machinery, through time, has changed the process.

Learning outcomes

- To understand that objects can give us information about how people lived and worked.
- To compare life in Victorian Britain and life today.



Key Stage 2

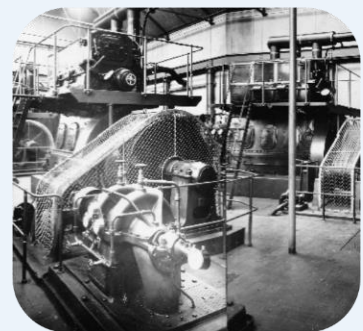
Key Stage 2 visits explore history, science, and changes in technology in a hands-on and engaging way. Visits run from 10:00 to 14:00 and cost £250 per class (group of up to 30 children). Bring two classes on the day for a cost of £225 per class (£450 total).

Your visit will include a guided exploration of the Museum, time in our Waterworks Gallery and Splash Zone (weather dependent) and one of the following workshops or focused days.

Sustainable Steam

New for 2023, our Sustainable Steam day explores the role Kew Bridge Waterworks has played in climate change.

With a focused exploration and workshop, pupils will explore how changes in technology impacted the Waterworks and the climate legacy these left behind. Pupils will then think forward to a more sustainable future.



We are incredibly grateful to Worley for their support in the development of this day.

Water Filtration

Pupils will discuss the importance and history of supplying clean water to homes. Using scientific equipment and different materials, pupils will then work as a team to create their own filtration beds.

Learning outcomes

- To conduct an experiment to test filtration, observe results and draw conclusions.
- To understand the importance of a clean water supply.



Victorian Washday

Pupils will explore, using real museum objects, how the Victorians did their clothes washing. They will consider the effort involved and how machinery, through time, has changed the process.

Learning outcomes

- To understand that objects can give us information about how people lived and worked.
- To understand how inventions have changed our lives.



Key Stage 3

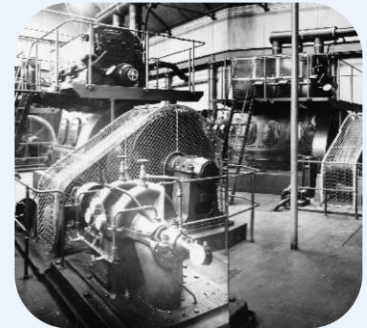
Our unique Key Stage 3 visits explore scientific concepts and developments in technology within our historic pumping station. Visits run from 10:00 to 14:00 and cost £275 per group of up to 30 children. Bring two classes on the day for a cost of £250 per class (\$500 total).

Your day will include a workshop and subject-specific guided exploration with a member of our Learning Team as well as time to explore our Waterworks Gallery and Splash Zone (Weather dependent).

Sustainable Steam

New for 2023, our Sustainable Steam day explores the role Kew Bridge Waterworks has played in climate change.

With a focused exploration and workshop, students will explore how changes in technology impacted the Waterworks and the climate legacy these left behind. Students will then explore some of the big questions the Museum is facing for a more sustainable future.



We are incredibly grateful to Worley for their support in the development of this day.

Engines and Energy

Our Engines and Energy day explores the history of water supply and the concept of energy transfer.

After a focused exploration of the Museum, the students will explore one of our stationary steam engines, making close observations of the engine and predictions about how they think it might work.



Water Filtration

Our Water Filtration day explores the history and importance of clean water supply.

As well as a focused exploration of the Museum, the students will conduct an experiment to test water filtration, observe their results and draw conclusions



SEND Groups

We pride ourselves on being a welcoming Museum, where you can come as you are. There's lots to see, smell, explore and investigate. Visits for SEND groups run from 10:00 to 14:00 and cost £250 per group of up to 20 children.

Our facilitated visits include a sensory exploration of the Museum, a show or workshops, time to explore our Waterworks Gallery and Splash Zone (weather dependent), and a creative activity.

Our Learning Team are passionate about offering inclusive learning opportunities to all and will work closely with you to ensure we meet the needs of your group.

Super Soggy Science Show

This interactive and fun show explores where water comes from, the 'monster soup' of 200 years ago, and how we can clean water!

Learning outcomes:

- To observe a phenomenon and use simple scientific language to explain what they see.
- To understand the water cycle.



Water Filtration

Pupils will work as a team to create their own filtration beds, observing and sharing their results.

Learning outcomes

- To conduct an experiment to test filtration, observe results and draw conclusions.
- To understand the importance of a clean water supply.



Before your visit

Booking

Booking is essential for all school groups visiting the Museum. Once we have confirmed your visit date and received a completed and signed booking form, you will be sent an invoice for your visit. Payment must be received two weeks prior to your visit; payment details will be found on your invoice.

Water Conservation Trust Bursary

We are delighted to be able to offer a bursary to visit the Museum thanks to the generous support of the Water Conservation Trust. Full details about the bursary, including eligibility and how to apply, can be found on our website: <https://waterandsteam.org.uk/school-visits/wct-bursary/>.

Special Requirements

Please talk to our Learning Team about any additional requirements you have, including specific needs and access requirements. We are happy to support and modify visits to ensure all your pupils get the most out of their visit.

Pre-visits

We recommend making a free pre-visit to the Museum to prepare your risk assessment and familiarise yourself with the facilities available. Our team will be happy to answer any questions regarding your visit. Free pre-visits are available after your visit is booked.

Health and Safety

We have a risk assessment which covers the activities run by the Museum. We strongly recommend schools produce their own risk assessment for their visit. We work hard to make the museum as safe as possible, however the following is a non-exhaustive list of potential hazards:

- **Hazards inside the museum**
 - Floors and ramps may be slippery.
 - Some uneven stone flooring in the engine houses.
 - Steps and ramps throughout the museum, including a spiral staircase.
 - Drops down from gallery/balcony areas.
- **Hazards in the Splash Zone, garden, and outdoors areas**
 - Gravel areas and paths, stone walls, uneven surfaces, and steps.
 - Trees and shrubs in the garden.
 - Ground may be slippery when wet.
 - Splash Zone contains water, which is chlorinated and regularly changed.
 - Moving vehicles in the car park.
- **Activities**
 - Artefacts may be heavy for some children and need to be handled with care.

- Children may be asked to feel different surfaces, for example: stone surfaces and sand.
- Interactives exhibits have moving parts.

First aid boxes are available at the Museum. It is advisable that a qualified first aider from school is included in the visiting group. Schools are responsible for ensuring any medication required by pupils is brought on their visit.

Adult to pupil ratios

To meet health and safety and safeguarding requirements we require the following adult to child ratios:

- Early Years - 1:5
- Key Stage 1 - 1:5
- Key Stage 2 - 1:10
- Key Stage 3 - 1:10

Teachers and adults fulfilling these ratios are admitted free of charge, as well as adults needed for 1-to-1 support. Additional adults will be charged the standard group rate which is currently £7.50 per adult.

Cancellations

We regret that no refunds can be given for cancellations made less than one week in advance of your visit. If a cancellation must be made due to exceptional circumstances, every effort will be made to reschedule your visit.



On the day

When you arrive

If travelling by coach, they should park in our car park. Please ask your coach driver to be considerate of the environment and our neighbours when waiting in the car park.

If you are stuck in traffic or experience delays with public transport, don't worry! Call 020 8568 4757 to let us know.

When you arrive, please head to the Museum's main entrance where a member of our Learning Team will meet you.

During your visit

We will make every effort to ensure you have a fantastic visit. Behaviour and discipline of pupils remains the responsibility of teachers and accompanying adults. If you would like to visit the shop, please let us know via email. We kindly request that this done in small groups of no more than 10 during the lunch break.

In the event of an emergency, please follow the instructions given by the members of Museum staff. The assembly point is in the Museum carpark and the Splash Zone. These will be signposted to you when you arrive.

An example itinerary for a visit is:

	Group 1 (Up to 30 pupils)	Group 2 (Up to 30 pupils)
10am	Arrival and welcome talk, including health and safety, housekeeping, and an introduction to the museum.	
10:20am	Facilitated Workshop	Waterworks Gallery
11:05am	Waterworks Gallery	Facilitated Workshop
11:50am	Lunch	
12:30pm	Guided exploration of the museum	Splash Zone
1:05pm	Splash Zone	Guided exploration of the museum
1:40pm	Summary of the visit and goodbyes	
2pm	Departure	



After the visit

We're always keen to celebrate our successes and look for ways we can continually develop the learning programme at the London Museum of Water & Steam. At the end of your visit, you will be asked to complete feedback survey; we would be most grateful for open and honest feedback about your time with us.

If you would like to discuss your visit in more detail, please contact our Learning Team on learning@waterandsteam.org.uk.