

Welcome to the London
Museum of Water & Steam!



This is the entrance to the
Museum.



Someone from our Learning Team will spend the day with you.



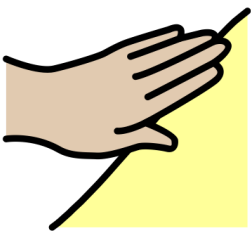
Rhiannon, Olivia, Judy, Kayleigh, Kate, Phil, Lesley

Rules



Listen

Listen to us, your adults and each other.



Touch

Some of our engines are oily and dirty. We will say if you can't touch something.



Speak

Share your ideas and ask us questions.

Please don't shout.



Respect

Respect each other, our team and the Museum.



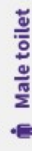
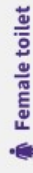
People

There will be other people at the Museum during your visit.

Museum Map

Map Key:

- 1 Car Park and Entrance
- 2 Reception, Shop and Café
- 3 Waterworks Gallery
- 4 Steam Hall
- 5 Boulton and Watt Engine
- 6 Maudslay and Bull Engines
- 7 90 and 100-inch Engines
- 8 Electric House
- 9 Diesel House
- 10 Splash Zone
- 11 Waterworks Railway
- 12 Standpipe Tower
- 13 Museum Garden



Safety information

The Museum is a working heritage site with uneven floors in places and hot, moving machinery when our engines are in action. We ask visitors to stay beyond the barriers and observe safety procedures at all times. Children aged under 16 years old must be accompanied by an adult and supervised accordingly. Visiting dogs and other pets are not allowed on site, although assistance dogs are welcome. The Museum has a no-smoking and no-vaping policy.



Get hands-on
Waterworks Gallery

3

Don't miss the
Splash Zone

10

9 Diesel House

12 Tower

Look for the activities
in every gallery

Water the flowers

13

Museum Garden

Wild Play Garden

Chill Out in the
Babcock Room



FAMILY FRIENDLY
MUSEUM
AWARD



SHORTLISTED
2022

Inside the Museum is our
welcome desk, shop and café.



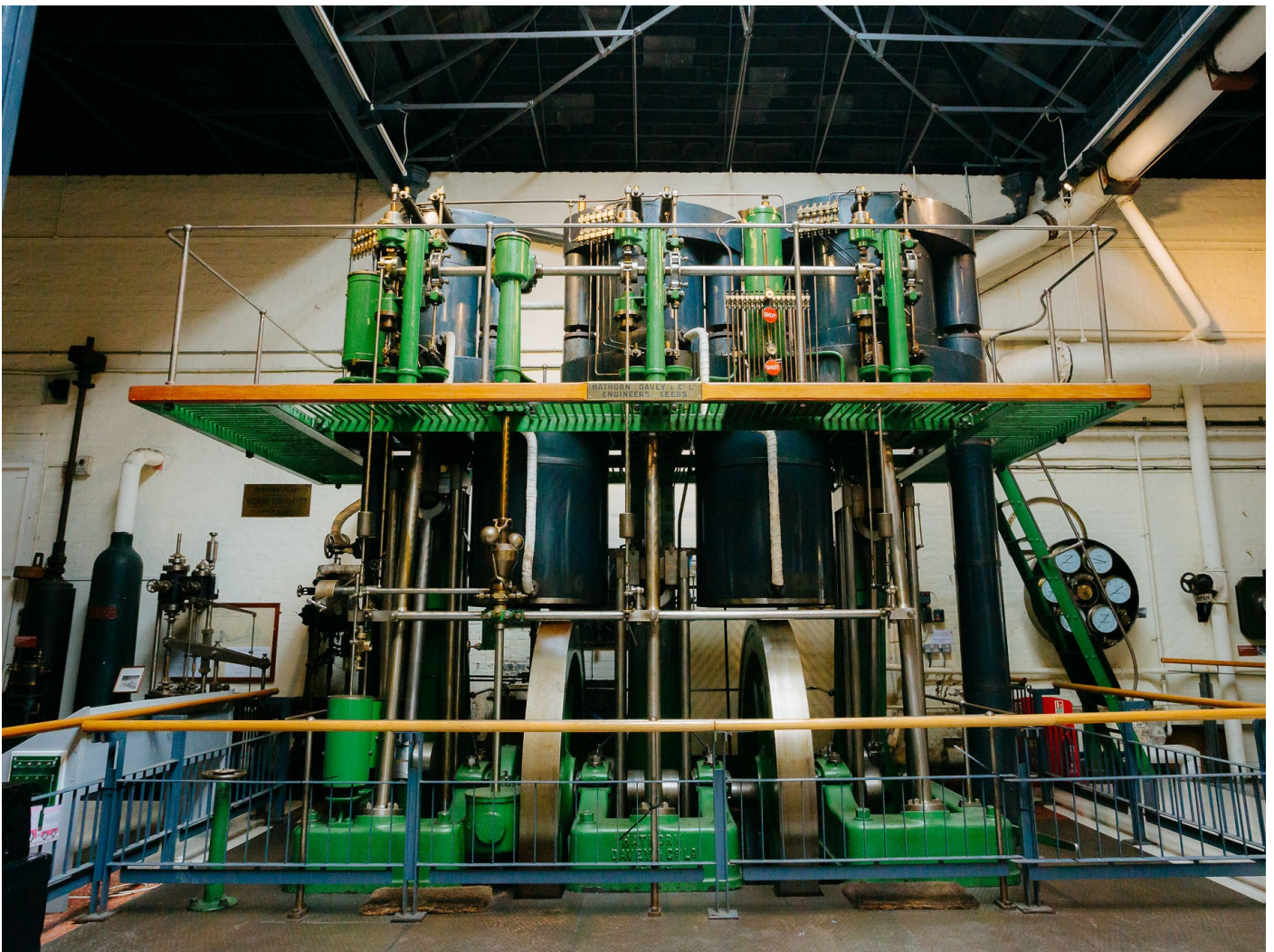
It can be noisy when you come inside the Museum.



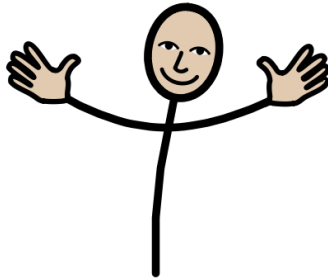
This is the Steam Hall.



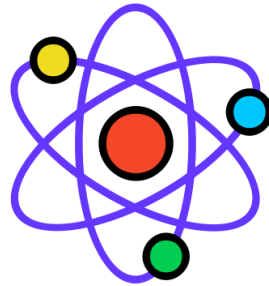
We will do some of your activities here. You will also eat your lunch here.



Our Day



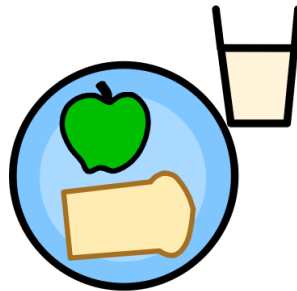
Welcome



Workshop



Waterworks
Gallery



Lunch



Guided
Exploration



Splash Zone



Goodbye

This is the Waterworks Gallery which you can explore.



It has some sounds and lights.



We will explore the Museum together.



This is our Splash Zone. You will be able to play here.



These are our toilets.



Our toilets have hand dryers in them.



We're looking forward to
welcoming you soon.

